

Livery place

BIRMINGHAM, B3 2PB



SMARTER OFFICE THINKING

Livery Place is a prestigious multi-let office development in Birmingham City Centre. As one of Birmingham's key city centre office buildings, substantial refurbishment has taken the building to Grade A specification, with significant expenditure on common areas and building services.

Livery Place is now home to a wide range of occupiers, from small companies to large multinational corporations. It sits adjacent to Snow Hill Station in the City's business district, alongside big name firms such as Barclays, KPMG, PWC, Mazars, Coutts and Santander as well as the new HS2 offices at Snowhill.

SMARTER OFFICE SPECIFICATION

Fully refurbished to a high specification throughout, including new finishes and fittings.

Office Specification:

- Daikin VRF independent air conditioning
- Part LED part LG7 compliant lighting
- Fully accessible raised floors
- Perforated metal tile ceiling

Building Amenities:

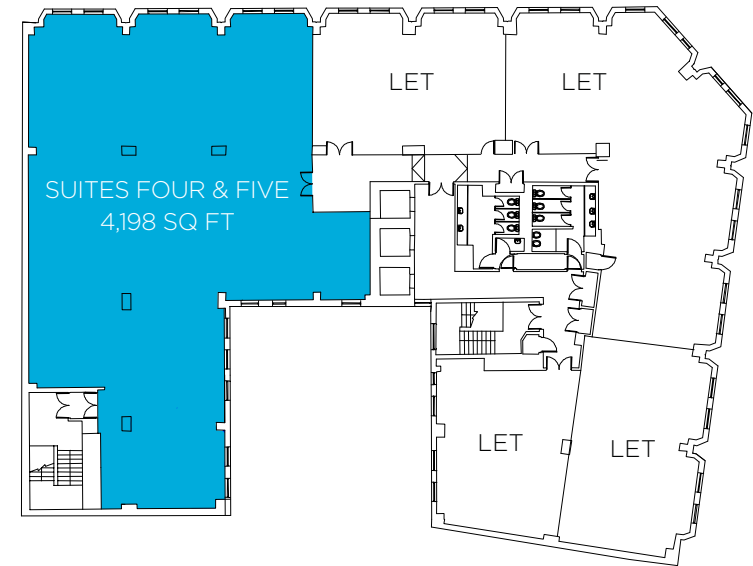
- Feature reception
- Allocated secure car parking
- Secure cycle storage
- Fully refurbished lift interiors
- Shower facilities on every other floor
- Disabled WC's
- Building manager, evening security and CCTV
- Secure basement storage available

SMARTER OFFICE ACCOMMODATION

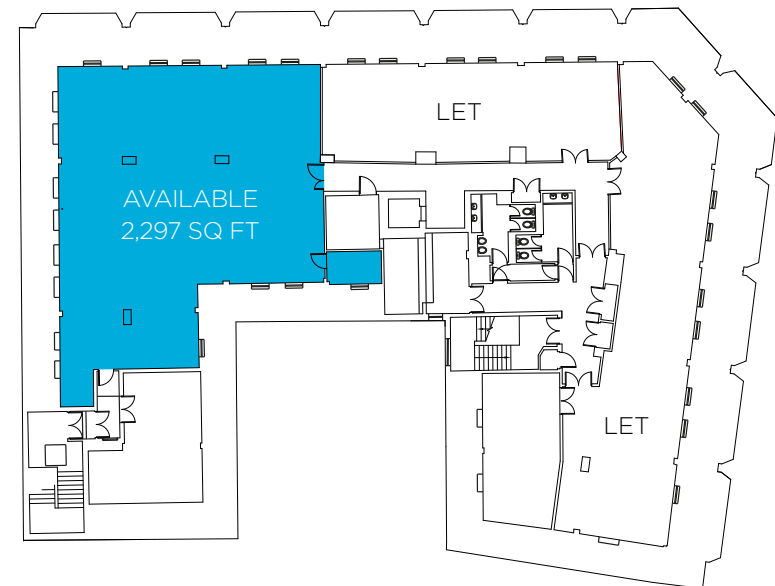
Office space ranging from 904 sq ft to 6,024 sq ft.

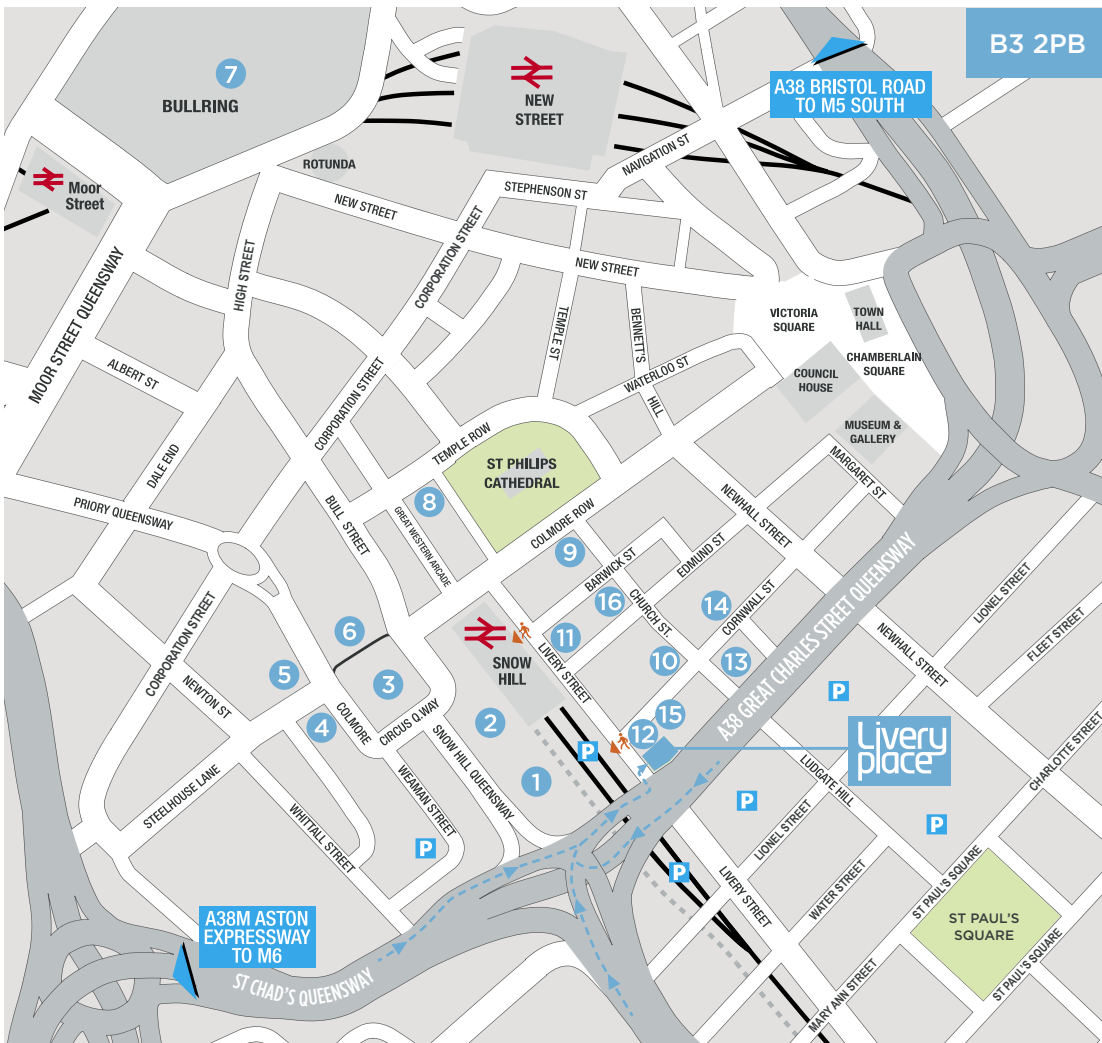
FLOOR	STATUS	SQ FT
Ground	Let	-
First	Part Available	4,198
Second	Let	-
Third	Part Available	-
Fourth	Let	-
Fifth	Let	-
Sixth	Let	-
Seventh	Part Available	2,297
Total		6,495

First Floor



Seventh Floor





- | | | | |
|---------------|-------------------------|-------------------|-------------------------|
| 1 Gowling WLG | 5 Shoosmiths | 9 The Grand Hotel | 13 Purnell's Restaurant |
| 2 Barclays | 6 Ernst & Young | 10 Mazars | 14 Opus Restaurant |
| 3 Wesleyan | 7 Selfridges & Bullring | 11 Direct Line | 15 PWC |
| 4 AMEY | 8 RBS | 12 Santander | 16 Hotel du Vin |



SMARTER OFFICE LOCATION

Birmingham boasts outstanding domestic, European and international travel links.

Travelling by road, Livery Place is off the A38, providing quick and convenient access to the national motorway network.

By rail, Birmingham's three mainline rail stations, New Street, Moor Street and Snow Hill are in close proximity providing access to a number of national locations as well as Birmingham International Airport.

A range of bars and restaurants providing everything from light bites on the go to Michelin-starred dining are located just steps away from Livery Place's front door.



FURTHER INFORMATION

For further information please contact our joint agents:



Theo Holmes
theo.holmes@cbre.com

Liz Bailey
liz.bailey@cbre.com.



George Jennings
george.jennings@avisonyoung.com